

# SHAREHOLDER PRESENTATION



**March 2019**

For personal use only

## Current Issued Share Capital

• FPOS	- 491,883,292
• Options	- 8,250,000 <small>2.4c exercise Mar 2020 (UNLISTED)</small>
	- 5,500,000 <small>5c exercise May 2021 (UNLISTED)</small>
	- 200,961,097 <small>5c exercise June 2021 (LISTED ASX:ESRO)</small>

## Board of Directors

Les Pereira (Chairman)  
 John Kingswood (Non-Executive)  
 Stephen Brockhurst (Non-Executive)

## Senior Management

Chris Daws CEO

## Major Shareholders

• Apollo Phoenix Resources P/L	15%
• Guiyun Wang	5.0%
• Mariner Mining	4.9%
• Kylie Campbell	4.2%
• Douglas Daws	3.0%

**Top 20 = 48.9%**



Estrella 12 month share price

# Carr Boyd- Introduction

- 100% owned Carr Boyd Ni/Cu Project, located 80km NNE of Kalgoorlie.
- Highly differentiated layered igneous complex with breccia hosted Ni/Cu mineralisation high up in the complex, inferred basal contact/feeder source.
- Discovered by a Great Boulder Mines Ltd and North Kalgurli JV between 1969 – 1972.
- Acquired by and mined by WMC from 1973 to 1975.
- Ni / Cu sulphides throughout the complex (sulphur saturation), where there is smoke.....
- Previous explorers only tested the obvious targets.

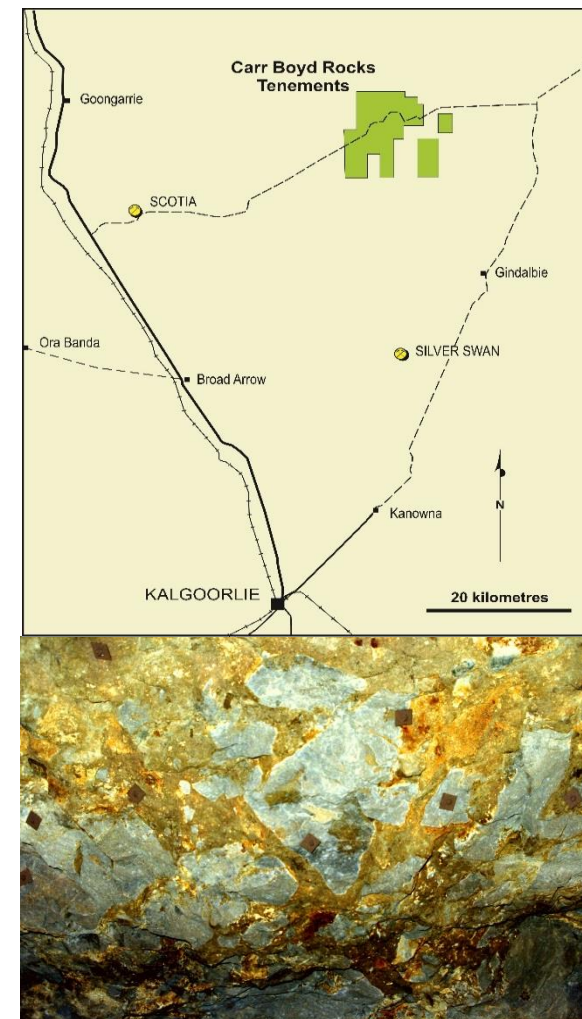
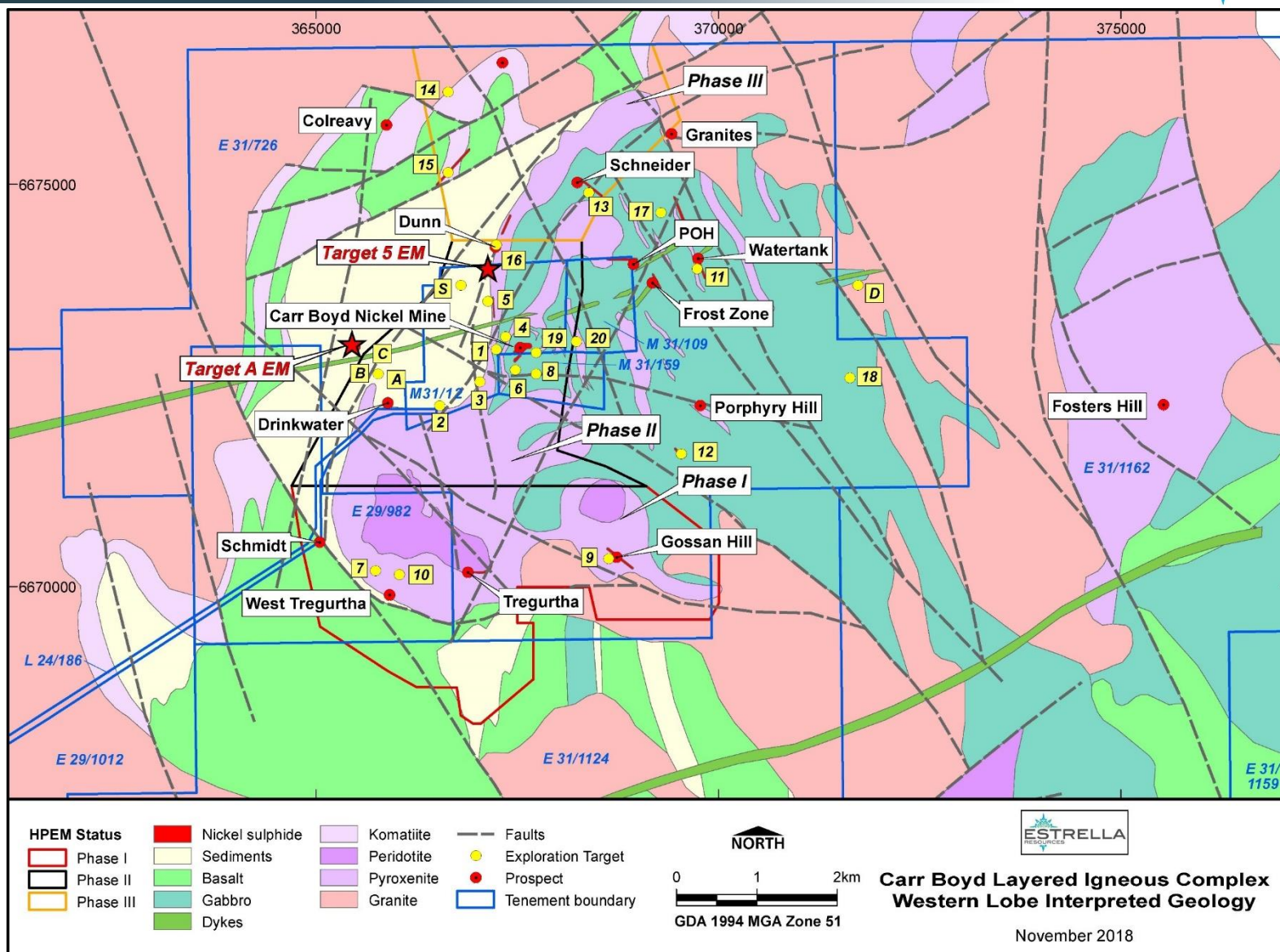


Photo of massive sulphide Ni ore CBR Mine



# CBLC Targets on Interpreted Geology



# Carr Boyd- Work Completed

- Diamond holes re-entered at Car Boyd mine and HPEM surveyed, technique proven effective.
- Yilgarn 1400m hole CBD022, re-logged geologically, consultation with Dr Martin Gole, sulphur saturation and high prospectivity of CBLC confirmed.
- Historic detailed gravity and magnetic datasets re compiled, re processed, and 3D inversion modelled.
- Deep drilling at Tregurtha South and SWW have provided valuable geological data.
- Structural interpretation study completed.
- Cobalt mineralisation discovered drilling at Scotia East.\*
- Phase 2 and Phase 3 Ground HPEM completed.
- POW submitted for further drilling to commence.



\*See ASX release dated 27 March 2018



# Carr Boyd Mineralisation Tenor



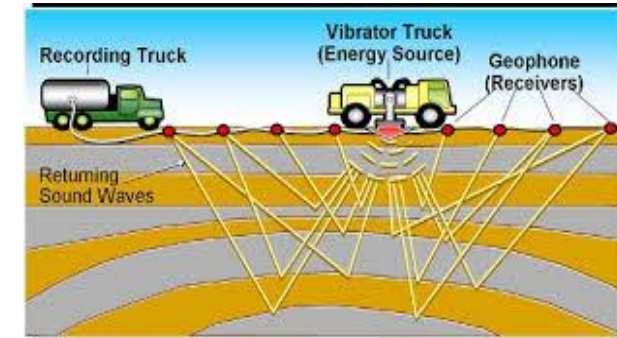
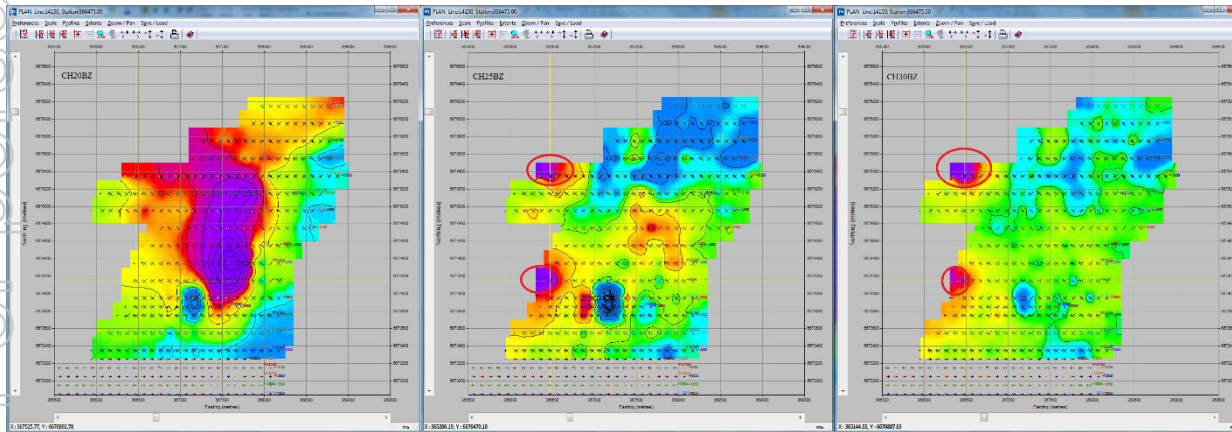
- Carr Boyd Rocks massive sulphide typically grades 6% nickel and 2% Copper
- Nickel tenor in a similar range to Nova-Bolloinger, but the copper ratio is higher
- Brownfields exploration has a much higher chance of success.....



# Carr Boyd Next Steps

- Undertake drilling of high ranking nickel targets
  - EM Target 5 - on strike from known Ni sulphides
  - EM Target A – immediately west of Carr Boyd Mine
- Undertake 2D seismic survey over Carr Boyd Mine

**“OUR AIM IS TO LOCATE THE SOURCE OF THE HIGH GRADE MASSIVE Ni SULPHIDE.”**

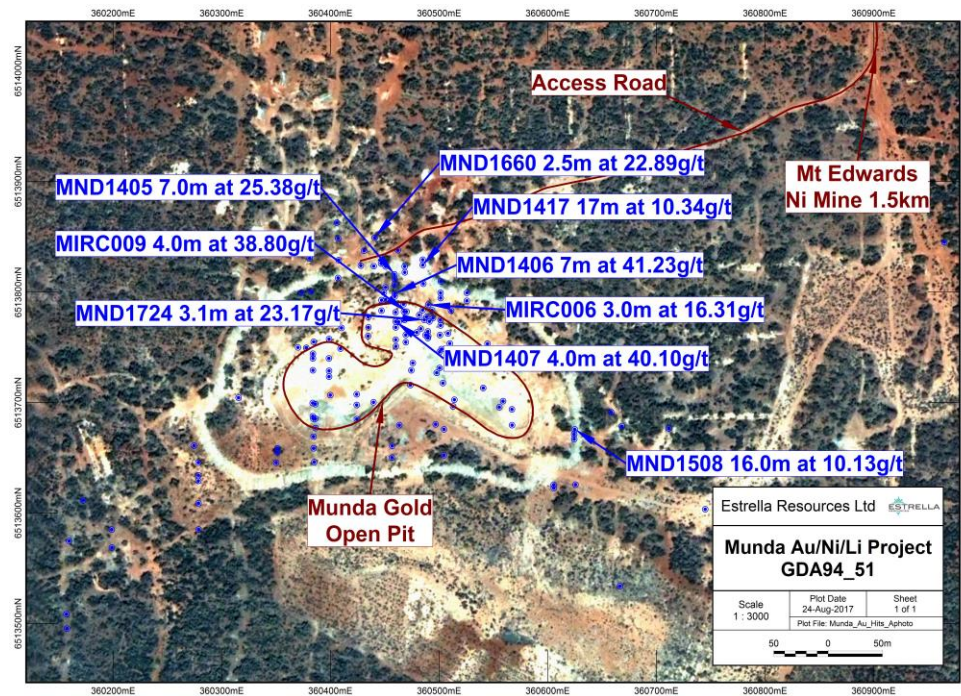


- Mine re-activation planning underway
- Previously mined high grade gold deposit
- JORC2012 resource
  - 511,000t @ 2.82g/t Au for 46,337Oz's Au\*
- Ideally located for development
- Similarities to Wattle Dam 15km north

## Drilling intercepts include;

- 7m @ 41.23g/t Au\*
- 4m @ 40.90g/t Au\*
- 4m @ 38.80g/t Au\*
- 17m @ 10.34g/t Au\*
- 16m @ 10.13g/t Au \*

\*See ASX release dated 4 September 2017



## 6 Month Gold Price in AUD/oz





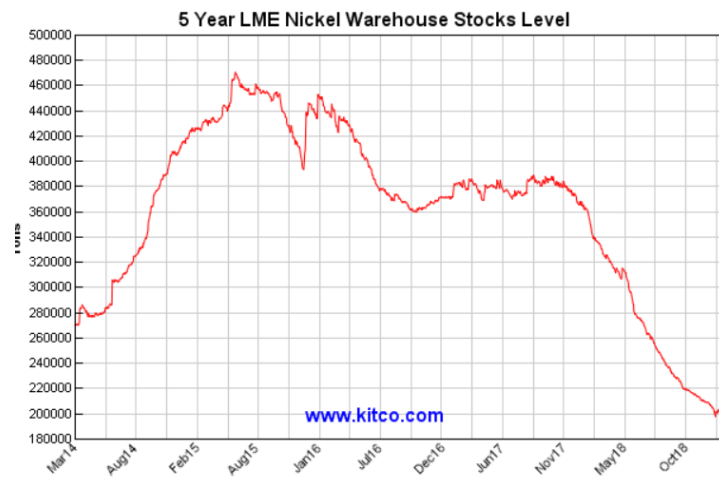
## Work continuing .....

- New flotation test work underway on oxide and transitional ore
- High grade nickel extends from pit floor
- Recent spectacular drill intercepts;
  - 15m @ 10.45% Ni\*
  - 5m @ 11.32% Ni\*
  - 3m @ 12.90% Ni\*
- Multiple EM targets remain untested below nickel mine workings
- Assessment of historic ore resources

\*See ASX release dated 6 December 2018

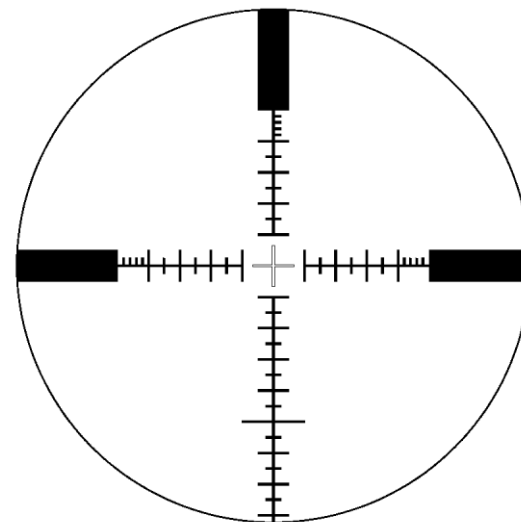


Water soluble nickel Spargoville Nickel Project



Spot quotes are non-LME prices

- **Confirmed high priority targets for drilling CBLC**
- **Methodical and through program of works**
- **Munda gold project compelling at +A\$1,800**
- **Spargoville flotation test work a potential game changer**





# Disclaimer & Declaration



This presentation has been prepared by Estrella Resources Limited ("ESR") as a summary of the company's exploration and development activities, with particular reference to the Carr Boyd Ni/Cu Project near Kalgoorlie, WA.

## **No Offer of Securities**

The presentation is not, and should not, be considered as an offer or invitation to subscribe for, or purchase any securities in ESR, or as an inducement to make an offer or invitation with respect to those securities. No agreement to subscribe for securities in ESR will be entered into on the basis of this presentation.

## **Forward Looking Statements**

This presentation contains certain forward looking statements which have not been based solely on historical facts but, rather, on ESR's current expectations about future events and on a number of assumptions which are subject to significant uncertainties and contingencies many of which are outside the control of ESR and its directors, officers and advisers.

## **Reliance on Third Party Information**

Due care and attention has been taken in the preparation of this presentation. However, the information contained in this presentation (other than as specifically stated) has not been independently verified nor has it been audited. Accordingly, the company does not warrant or represent that the information contained in this presentation is accurate or complete. To the fullest extent permitted by law, no liability, however arising, will be accepted by ESR or its directors, officers or advisers, for the fairness, accuracy or completeness of the information contained in this presentation.

## **Competent Person Declaration**

The information in this presentation that relates to Exploration Results, Mineral Resources or Ore Reserves is based on information compiled by Mr Luke Marshall, who is a consultant to Estrella Resources and who is a member of The Australasian Institute of Geoscientists. Mr Marshall has sufficient experience that is relevant to the style of mineralisation and type of deposit under consideration and to the activity that he is undertaking to qualify as a Competent Person as defined in the 2012 Edition of the "Australasian Code for Reporting of Exploration Results, Mineral Resource and Ore Reserves". Mr Marshall consents to the inclusion in the presentation of the matters based on his information in the form and context in which it appears.